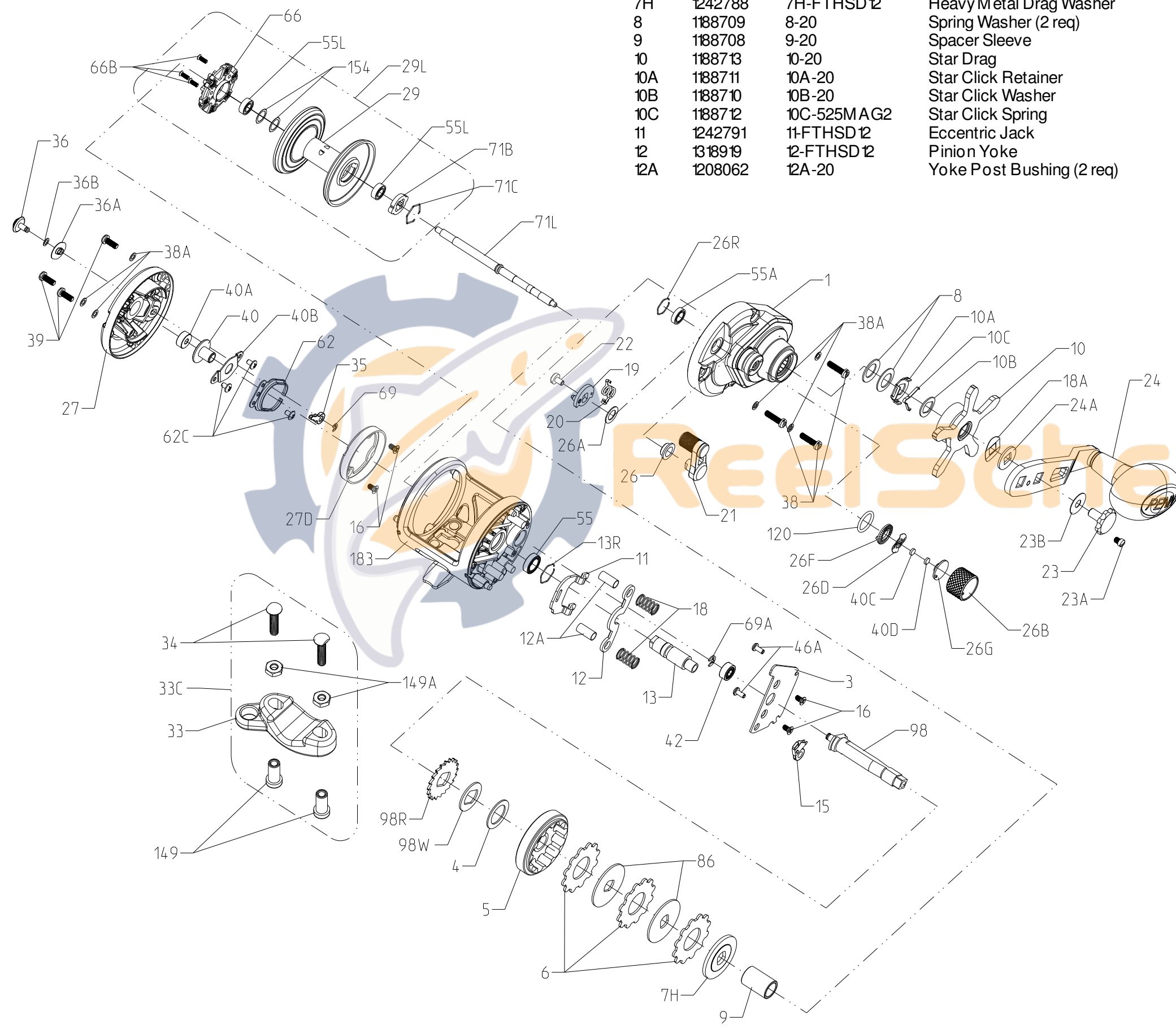




**PARTS LIST FOR MODEL FATHOM SD 12**  
**REEL PART NO. 1238442**



| Key No. | Part No. | PENN Style No. | Description               |
|---------|----------|----------------|---------------------------|
| 1       | 1242785  | 1-FTHSD 12     | Right Side plate Assembly |
| 3       | 1242786  | 3-FTHSD 12     | Bridge                    |
| 4       | 1180775  | 4-349          | Drag Washer               |
| 5       | 1242789  | 5-FTHSD 12     | Main Gear                 |
| 6       | 1237037  | 6-TRQ40        | Drag Washer Tab (3 req)   |
| 7H      | 1242788  | 7H-FTHSD 12    | Heavy Metal Drag Washer   |
| 8       | 1188709  | 8-20           | Spring Washer (2 req)     |
| 9       | 1188708  | 9-20           | Spacer Sleeve             |
| 10      | 1188713  | 10-20          | Star Drag                 |
| 10A     | 1188711  | 10A-20         | Star Click Retainer       |
| 10B     | 1188710  | 10B-20         | Star Click Washer         |
| 10C     | 1188712  | 10C-525MAG2    | Star Click Spring         |
| 11      | 1242791  | 11-FTHSD 12    | Eccentric Jack            |
| 12      | 1318919  | 12-FTHSD 12    | Pinion Yoke               |
| 12A     | 1208062  | 12A-20         | Yoke Post Bushing (2 req) |

| Key No. | Part No. | PENN Style No. | Description                |
|---------|----------|----------------|----------------------------|
| 13      | 1242790  | 13-FTHSD 12    | Pinion                     |
| 13R     | 1229364  | 13R-TRQ40      | Retaining Ring             |
| 15      | 1188675  | 15-20          | Anti Reverse Dog           |
| 16      | 1188686  | 16-20          | Bridge Screw (4 req)       |
| 18      | 1188688  | 18-20          | Pinion Yoke Spring (2 req) |
| 18A     | 1188714  | 18A-20         | Keyed Spring Washer        |
| 19      | 1188691  | 19-20          | Eccentric                  |
| 20      | 1242806  | 20-FTHSD 12    | Eccentric Spring           |
| 21      | 1242830  | 21-FTHSD 12    | Eccentric Lever            |
| 22      | 1188690  | 22-20          | Eccentric Screw            |
| 23      | 1208117  | 23-FTH20LW     | Handle Screw               |
| 23A     | 1188717  | 23A-20         | Handle Lock Screw          |
| 23B     | 1207784  | 23B-20         | Handle Screw Washer        |
| 24      | 1188716  | 24-20          | Handle Assembly            |
| 24A     | 1188715  | 24A-20         | Handle Thrust Washer       |
| 26      | 1188692  | 26-20          | Bushing                    |
| 26A     | 1242792  | 26A-FTHSD 12   | Washer                     |
| 26B     | 1208114  | 26B-FTH20LW    | Spool Tension Control Cap  |
| 26D     | 1125769  | 26D-525MAG2    | Click Spring               |
| 26F     | 1125768  | 26F-525MAG2    | Click Plate A              |
| 26G     | 1125772  | 26G-525MAG2    | Click Plate B              |
| 26R     | 1214654  | 26R-525MAG2    | Ring Retaining             |
| 27      | 1242793  | 27-FTHSD 12    | Left Side Plate            |
| 27D     | 1242794  | 27D-FTHSD 12   | Centrifugal Brake Path     |
| 29      | 1242795  | 29-FTHSD 12    | Spool                      |
| 29L     | 1242835  | 29L-FTHSD 12   | Spool Assembly             |
| 33      | 1182754  | 33-13          | Rod Clamp                  |
| 33C     | 1229936  | 33C-TRQ40      | Rod Clamp Kit              |
| 34      | 1182788  | 34-45          | Screw (2 req)              |
| 35      | 1188656  | 35-20          | Click Tongue               |
| 36      | 1242796  | 36-FTHSD 12    | Click Button               |
| 36A     | 1208113  | 36A-FTH20LW    | Click Washer               |
| 36B     | 1188651  | 36B-20         | Click PVC Washer           |
| 38      | 1188698  | 38-20          | Screw (3 req)              |
| 38A     | 1188649  | 38A-20         | Flat Washer (6 req)        |
| 39      | 1188638  | 39-20          | Screw (3 req)              |
| 40      | 1230004  | 40-TRQ40       | Bushing L.S. Spool         |
| 40A     | 1242804  | 40A-FTHSD 12   | Bearing                    |
| 40B     | 1242805  | 40B-FTHSD 12   | Protector Bearing          |
| 40C     | 1208115  | 40C-525MAG2    | Washer, Metal Thrust       |
| 40D     | 1125771  | 40D-525MAG2    | Washer, Rubber Thrust      |
| 42      | 1188661  | 40-20          | Ball Bearing               |
| 46A     | 1183585  | 46A-4300       | Screw (2 req)              |
| 55      | 1214665  | 55-525MAG2     | Ball Bearing               |
| 55A     | 1214666  | 55A-525MAG2    | Ball Bearing 6x10x2.5      |
| 55L     | 1192031  | 55L-965        | Ball Bearing (2 req)       |
| 62      | 1188664  | 62-20          | Click Spring               |
| 62C     | 1188654  | 62C-20         | Screw (3 req)              |
| 66      | 1242797  | 66-FTHSD 12    | Centrifugal Brake          |
| 66B     | 1242798  | 66B-FTHSD 12   | Screw (3 req)              |
| 69      | 1188657  | 69-20          | Retainer                   |
| 69A     | 1188659  | 69A-20         | Retainer                   |
| 71B     | 1230226  | 71B-TRQ40      | Spool Driver               |
| 71C     | 1230227  | 71C-TRQ40      | Retaining Ring             |
| 71L     | 1242799  | 71L-FTHSD 12   | Spool Shaft                |
| 86      | 1184251  | 86-49L         | Drag Washer Keyed (2 req)  |
| 98      | 1188700  | 98-20          | Main Gear Shaft            |
| 98R     | 1242800  | 98R-FTHSD 12   | Anti Reverse Ratchet       |
| 98W     | 1242801  | 98W-FTHSD 12   | Ratchet Thrust Washer      |
| 120     | 1184522  | 12013H         | O-ring                     |
| 149     | 1184702  | 149-45         | Nut, Rod Clamp (2 req)     |
| 149A    | 1184706  | 149-200        | Nut, Hex (2 req)           |
| 154     | 1242803  | 154-FTHSD 12   | Shim (As Needed)           |
| 183     | 1242802  | 183-FTHSD 12   | Frame Assembly             |